

Modeling the Union Pacific?
Join the Union Pacific
Historical Society
PO Box 4006
Cheyenne WY 82003-4006
<http://www.uphs.org>

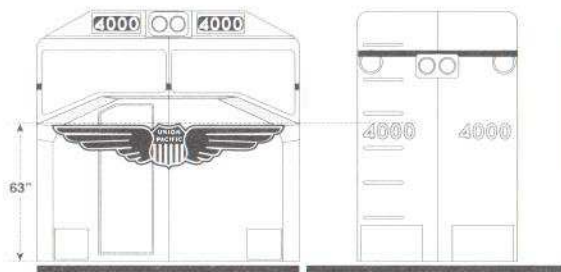
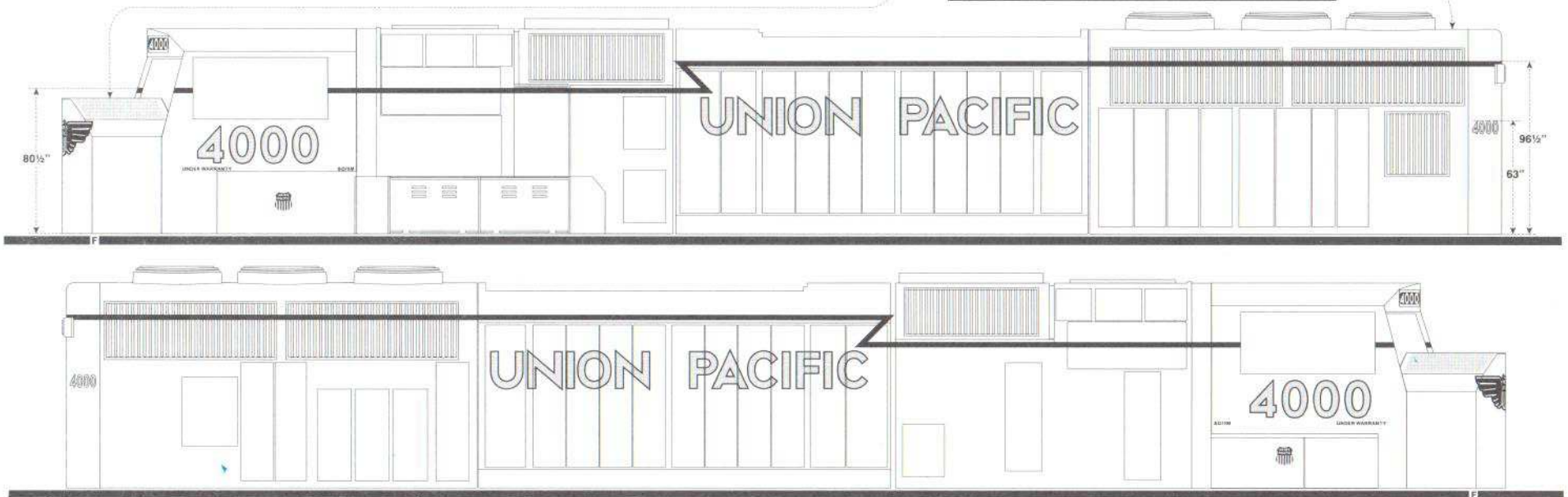
Other Microscale decal sets in which you may be interested:

	HO	N
Data for EMD 70-Series DsIs	MC-4161	60-4161
UP Diesel Striping	87-110-5	60-110-5
UP Diesel Numbers	87-1068	60-1068
UP Renumbered Diesels (00)	MC-4328	60-4328
UPY Switchers (2000+)	87-1102	60-1102
UP Diesels w/ "We Will Deliver" (1996+)	87-977	60-977
UP SD90MAC Diesels ('96+)	87-997	60-997
EMD SD90MAC Demo ('97+)	MC-4232	
UP Olympic Torch Diesel ('96)	87-1053	60-1053
UP United Way Diesel (1994+)	87-851	60-851
UP Desert Storm Diesel ('91)	MC-4048	60-621

References:
Union Pacific Locomotive Directory 2000 by Strack (Withers Publishing)
 "The Streamliner" Magazine (UPHS)

MICROSCALE Decal
 HO Scale **87-1103**
 N Scale **60-1103**
Union Pacific
SD70M Diesels
(2000+)

Grey Anti-Skid patches are applied to the top of the nose and around and behind the rear fan on the roof.



In 1999 the Union Pacific Railroad placed an order with General Motors' Electromotive-Division for 1000 SD70M diesels. It was announced in January 2000 that these engines would herald the return of the "winged shield" logo formerly applied to UP's passenger diesels. Numbered 4000 through 4999, the new SD70Ms began showing up on UP's rails in late April 2000. The "winged shield" was to also begin appearing on other wide-nosed engines (SD60Ms, SD90MACs, Dash 8-40CW, Dash 8-41CWs, Dash 9-44CWs, AC4400CWs and the former SP SD70Ms) as they recieved new paint.

On HO models, use a
 Details West #235-303 Snowplow.

For more information
 on the Microscale line of model
 railroad decals, visit us on-line at:
<http://www.microscale.com>

YELLOW (Accupaint AP-67, Floquil 110166, Modelflex 16-24, Polly Scale 414170, Scalecoat 22, Scalecoat II 2022):
 Everything between the two red stripes.
GRAY (Accupaint AP-68, Floquil 110167, Modelflex 16-25, Polly Scale 414176, Scalecoat 32, Scalecoat II 2032):
 Everything above or below the two red stripes, including the fuel tank and truck sideframes.