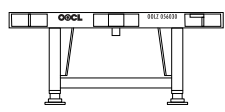
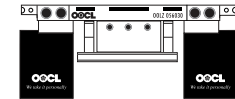
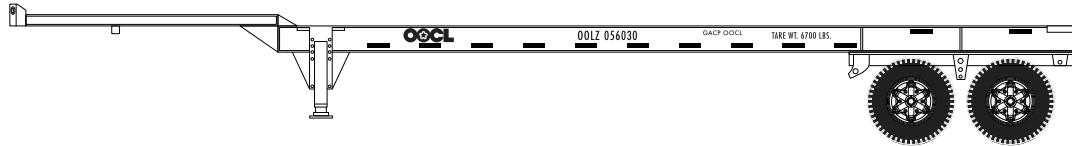


This set will cover a variety of containers and chassis for the Orient Overseas Container Line (OOCL). OOCL was founded by C.Y. Tung In 1947 as the Orient Overseas Line. It changed its name to Orient Overseas Container Line in 1969, when it began the process of containerization. In 1969, OOCL was the first Asian shipping line to transport containerized cargo across the Pacific, and in doing so changed the face of global trade in the Asia Pacific region. At its peak, OOCL had a shipping fleet with over 150 freight ships, with a cargo capacity exceeding 10 million tons; it was one of the world's top seven shipping lines.

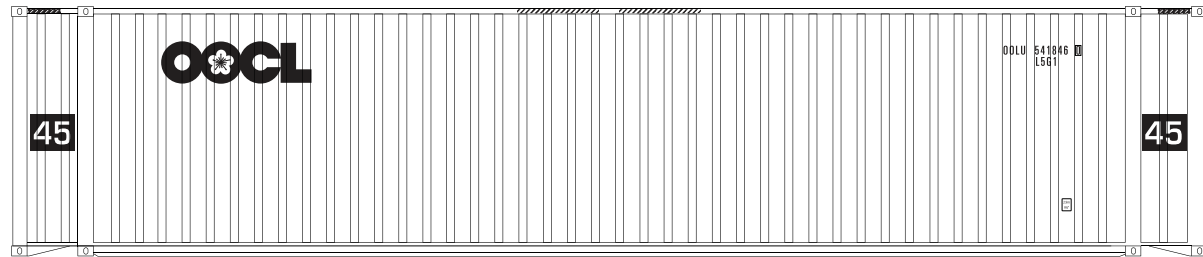
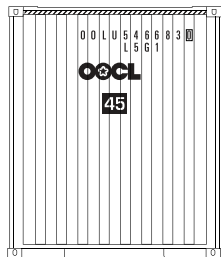
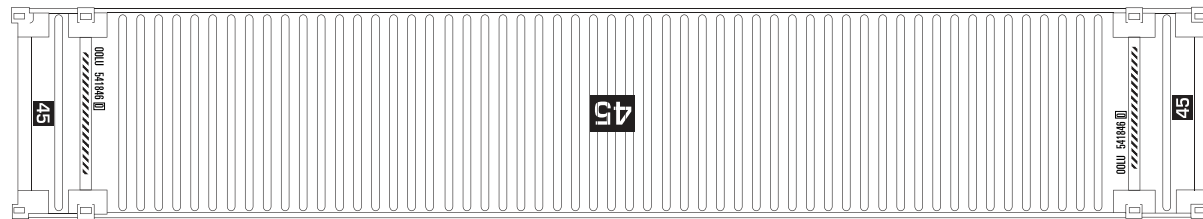
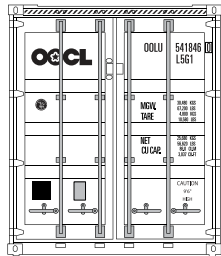
MICROSCALE Decal
 HO Scale 87-1494
 N Scale 60-1494



FRONT



REAR



Paint Info:

Container Painted Model Masters - Licht Grau 2077
 Chassis Painted Testors - Deep Yellow 2118

Photos and data available here:

<http://rrpicturearchives.net/>

visit us online!
www.microscale.com
 sign up for the
 monthly newsletter!