

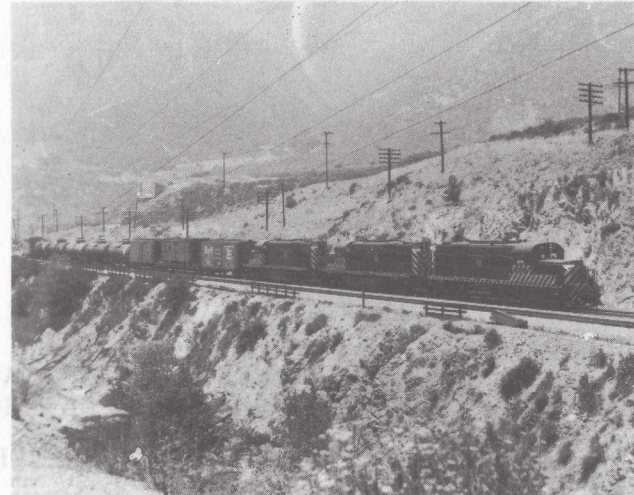
HO Scale

87-248

SANTA FE ZEBRA'S #2

MICROSCALE DECAL

ROAD ENGINES

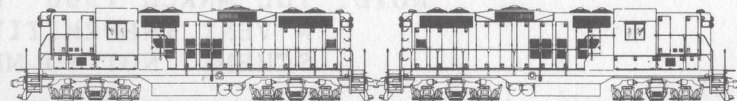


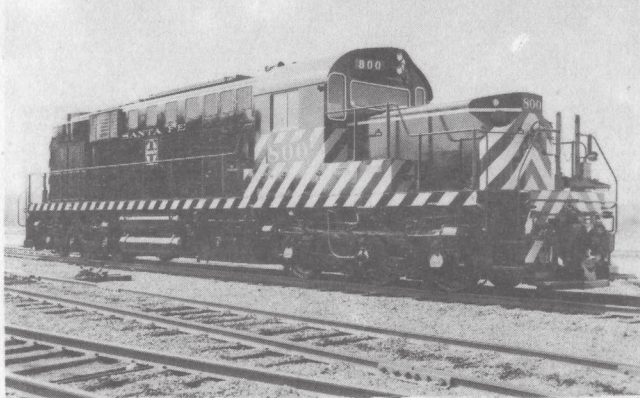
DUE TO THE SPACE THAT THE END STRIPING  
TAKES UP, WE PUT ADDITIONAL STRIPING  
ON SHEET # 91154.

NUMBER BOARD NUMBERS ARE CLEAR FOR MODELERS WHO WISH  
TO ILLUMINATE THEIR NUMBER BOARDS.  
FOR UNLIT NUMBER BOARDS, PAINT BACKGROUND WHITE, THEN  
APPLY DECALS.

THE FOLLOWING PUBLICATIONS WILL PROVIDE ADDITIONAL  
INFORMATION:

RAILROAD MODEL CRAFTSMAN  
PROTOTYPE MODELER  
RAILROAD MODELER  
PACIFIC NEWS  
EXTRA 2200 SOUTH  
MODEL RAILROADER  
TRAINS  
RAILFAN  
RAIL CLASSICS  
CARSTENS PUBLICATION BOOKS  
KALMBACH PUBLISHING CO. BOOKS





THESE ENGINES ARE PAINTED BLACK WITH SILVER STRIPING.  
THE ROAD ENGINES ALSO HAVE A BLUE AND SILVER HERALD.

Tru-Color Paint offers an Engine Black Color;TCP-010



PHOTOGRAPHS COURTESY; CHARLEY SLATER,  
STEVE DUNHAM AND THE SANTA FE RR..

NOTE: THE MARCH 1980 "RAILROAD MODELER" HAS  
A VERY INFORMATIVE ARTICLE ON THIS PAINT  
SCHEME. NOT TO MENTION A ROSTER.