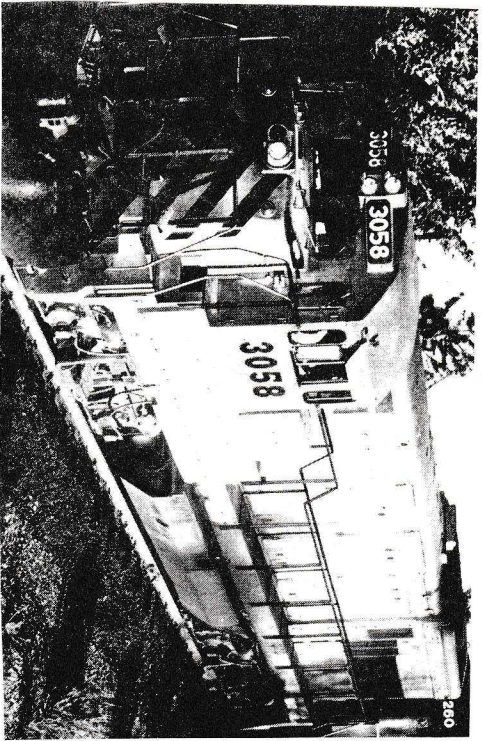


H0 Scale
NO.
87-26

WESTERN PACIFIC (EARLY)
MICROSCALE DECAL

TRAIN



U-30-B

Use Floquist Daylight orange,
engine black & bright silver.

GP-7	701-713
GP-9	725-732
U-30-B	751-769
GP-20	2001-2010
GP-35	3001-3022
GP-40	3501-3516
F3A	801A-803A, 801D
Renumbered	925A, D 926A
926A was	SN 303
F3B	801B, C-803B, C
FP7A	804A, D-805A, D
F7B	804B-806B
F7A	806Bex, 920B
F7B	913A, D-924A, D
FTA-FTB	913B, C-924B, C
	901A, B, C, D-
	912A, B, C, D

THE FOLLOWING PUBLICATIONS WILL PROVIDE ADDITIONAL INFORMATION:

RAILROAD MODEL CRAFTSMAN
MODEL RAILROADER MAGAZINE
TRAINS
RAILFAN
RAILROAD MODELER
RAIL CLASSICS
KALRBACH PUBLISHING CO. BOOKS
CARSTENS PUBLICATION BOOKS
EXTRA 2200 SOUTH

NUMBER BOARD NUMBERS ARE CLEAR FOR MODELERS WHO WISH TO ILLUMINATE THEIR NUMBER BOARDS.
FOR UNIT NUMBER BOARDS, PAINT BACKGROUND WHITE, THEN APPLY DECALS.

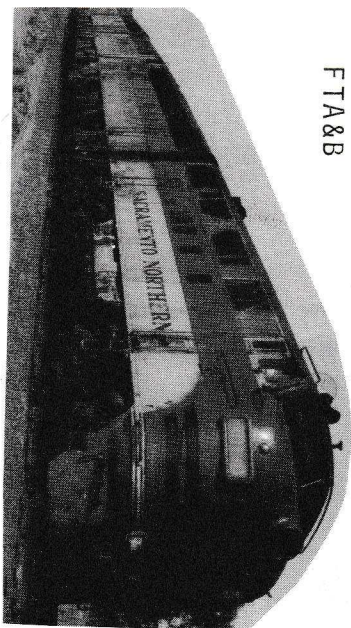
H0 Scale
NO.
87-26

WESTERN PACIFIC (EARLY)
MICROSCALE DECAL

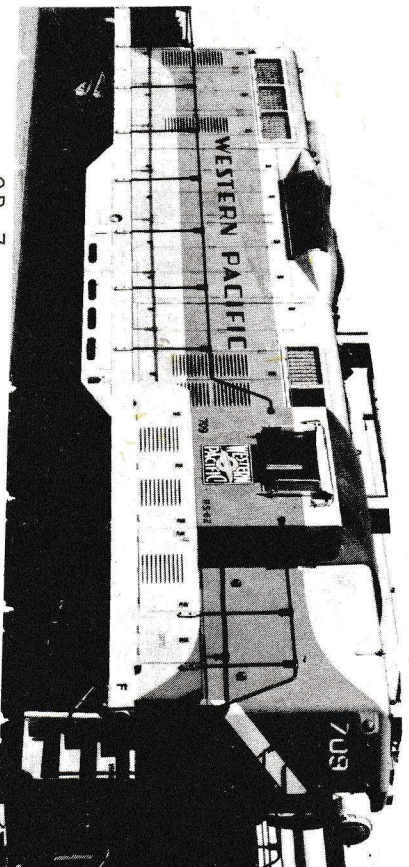
TRAIN



FTA&B



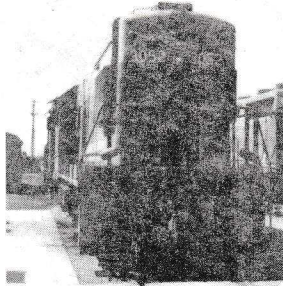
F3A



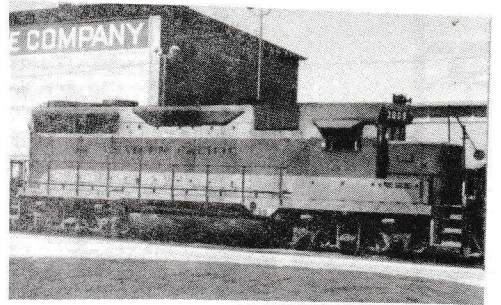
GP-7



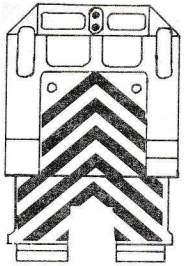
U-30-B



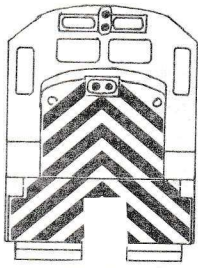
U-30-B



GP-35

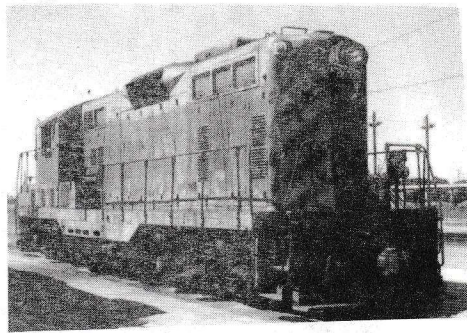


GP35 or GP 40

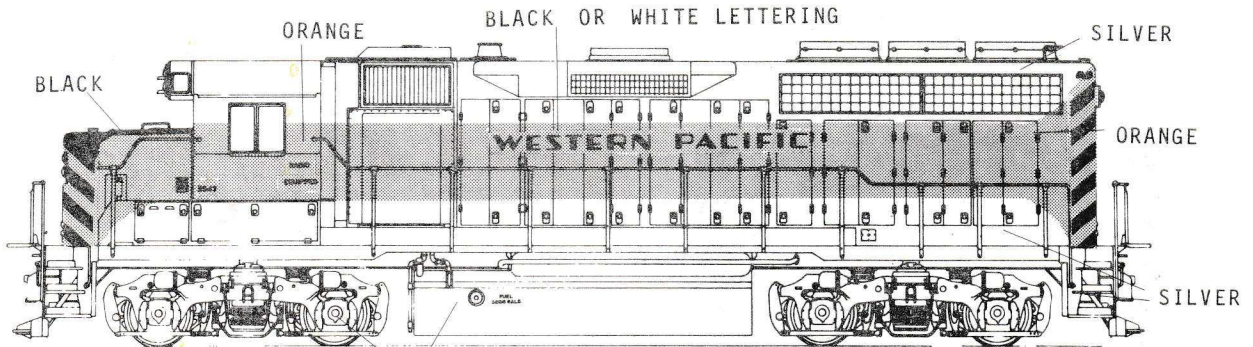


U30B

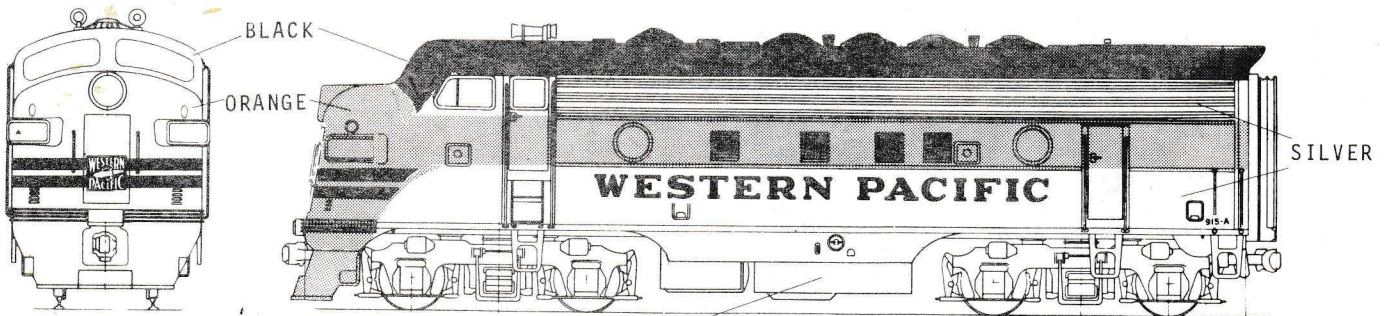
Athearn's U28B can be used as an early U30B



GP-9



BLACK UNDERFRAME & TRUCKS GP-40



BLACK UNDERFRAME & TRUCKS

F7A



Wings for FP7

Photos courtesy Railroad Modeler & John Giaconia.