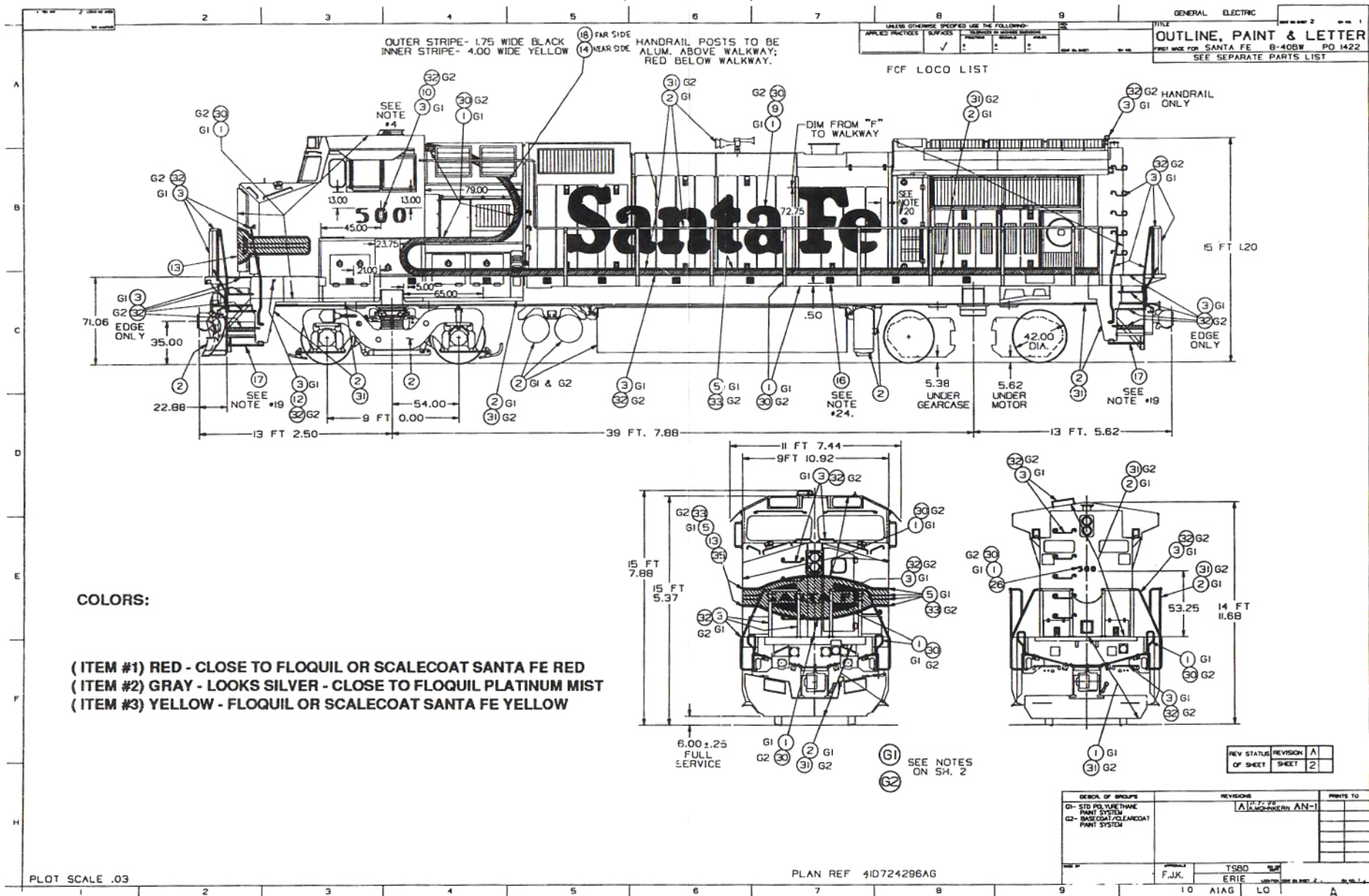


MICROSCALE DECAL NUMBER 87-637 SANTA FE B-40-8W SUPERFLEET LOCOMOTIVES



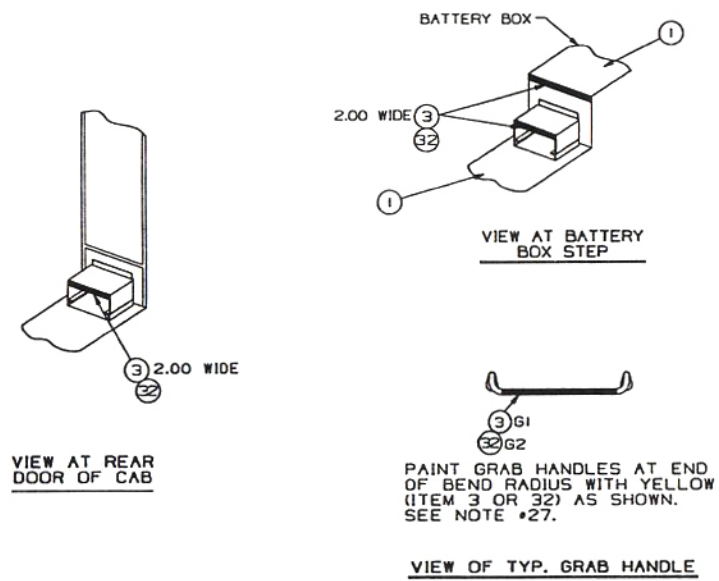
COLORS:

- (ITEM #1) RED - CLOSE TO FLOQUIL OR SCALECOAT SANTA FE RED
- (ITEM #2) GRAY - LOOKS SILVER - CLOSE TO FLOQUIL PLATINUM MIST
- (ITEM #3) YELLOW - FLOQUIL OR SCALECOAT SANTA FE YELLOW

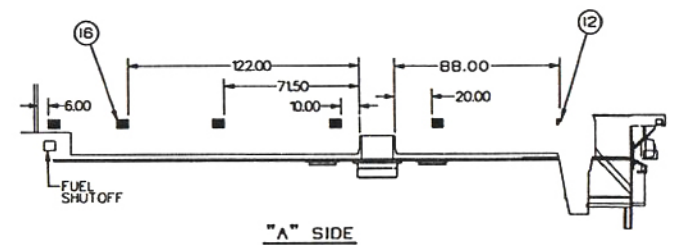
| REV STATUS | REVISION | A |
|------------|----------|---|
| OF SHEET | SHEET | 2 |

| DECAL GROUPS | REVISIONS | PRINTS TO |
|--|---------------------------------|-----------|
| G1- STD POLYURETHANE PAINT SYSTEM G2- BASECOAT/CLEARCOAT PAINT SYSTEM | REV. 78 ALAN ROSENKRANZ AN-1 | |
| APPROVED: F.J.K. | TSBO | |
| ERIE | LO | |

- NOTE #1 FINISH PAINT LOCO PER PROCESS P6C-EP25.
- NOTE #2 "DASH B-40BW" (ITEM 22) TO BE PAINTED IN 2.00 INCH BLACK LETTERS AND NUMERALS ON UPPER CONSOLE ABOVE STAIRWELL.
- NOTE #3 ALL HANDRAILS, POSTS, ECT. TO BE GRAY (ITEM 2 OR 32) EXCEPT WHERE SHOWN. THE PORTION OF THE SIDE HANDRAIL POSTS ON THE SIDE SKIRT ARE TO BE RED.
- NOTE #4 DO NOT PAINT THE E.O.T. OR RADIO ANTENNA.
- NOTE #5 PAINT THE INTERIOR OF EQUIPMENT CABS GRAY (ITEM 6).
- NOTE #6 STENCIL "DANGER HIGH VOLTAGE" (ITEM 23) USING 1 INCH HIGH RED (ITEM 15) LETTERS ON BOTH SIDES OF THE ALTERNATOR.
- NOTE #7 REAPPLY "CAUTION" STENCILS ON TOP OF DYNAMIC BRAKING GRID BOX AFTER PAINTING LOCOMOTIVE, USING BLACK PAINT.
- NOTE #8 PAINT THE INSIDE OF THE NUMBER BOXES WHITE USING ITEM 24.
- NOTE #9 ADD (3) SAFETY-WALK SELF ADHESIVE NON SKID STRIPS P36 (I) ON THE TOP OF EACH OF THE THREE STAINLESS STEEL STEP TRIM STRIP IN THE NOSE / OPERATOR CAB.
- NOTE #10 PAINT EMERGENCY BRAKE VALVE RED (ITEM 1).
- NOTE #11 DO NOT PAINT THE AIR FILTERS & DRYERS.
- NOTE #12 CREATE ABRASIVE PAINT BY MIXING RED PAINT (ITEM 1) & ABRASIVE MATERIAL PER PROCESS P6C-EP9.
- NOTE #13 PAINT PLATFORM WALKWAYS AND TOP OF AIR CONDITIONER RED USING RED ABRASIVE PAINT. (SEE NOTE #13)
- NOTE #14 CREATE ABRASIVE PAINT BY MIXING GRAY PAINT (ITEM 6) & ABRASIVE MATERIAL PER PROCESS P6C-EP9.
- NOTE #15 IN AUX. CAB, BRUSH PAINT DECK (APPROX. 15 SQ. FT.) WITH GRAY ABRASIVE ALKYD (SEE NOTE 13). DO NOT SPRAY PAINT IN THIS AREA.
- NOTE #16 BEFORE PAINTING MASK OFF ALL DEVICES INSIDE AIR BRAKE RACK ON "B" SIDE, AND WATER DRAIN VALVE INSTRUCTION PLATE ON VALVE IN ENGINE CAB.
- NOTE #17 LETTER "F" MUST BE YELLOW (ITEM 3 OR 32).
- NOTE #18 MASK OFF ALL POWER CABLES IN AUX. CAB, TRACTION MOTOR TERMINALS AND BOOTS, FLANGE LUBRICATOR HOSES AND NOZZLES ON TRUCKS, AND BRASS PARTS OF FUEL FILL.
- NOTE #19 APPLY SCOTCHLITE PER PROCESS P6A-EP6. AUDIT APPLICATION PER 41A24513L. APPLY 1.00 WIDE STRIP OF YELLOW SCOTCHLITE (ITEM 17) TO THE EDGE OF BOTTOM STEPS LEADING TO THE PLATFORM.
- NOTE #20 ON "B" SIDE, PLACE LETTERBOARD WITH RIGHT EDGE OF LETTER "R" 13.00 INCHES FROM RIGHT EDGE OF LAST ENGINE CAB DOOR. ON "A" SIDE, PLACE LEFT EDGE OF LETTER "S" 15.75 INCHES FROM LEFT EDGE OF LAST ENGINE CAB DOOR.
- NOTE #22 PAINT TRUST PLATE STENCIL (ITEM 20) LOCATED ON SIDE SILL #2 END BOTH SIDES AS SHOWN WITH GRAY PAINT (ITEM 6) AS REQUIRED PER ENGINEERING NOTICE.
- NOTE #24 APPLY 5" X 6" PIECES OF RED SCOTCHLITE (ITEM 16) TO THE SIDES OF LOCO APPROX AS SHOWN, CENTERED BETWEEN HANDRAIL POSTS WHERE POSSIBLE, BOTH SIDES OF LOCO (12 PCS PER SIDE).
- NOTE #25 IN GROUP 2, APPLY BASECOATS AND CLEARCOAT PAINT PER PROCESS (LATER).
- NOTE #26 THE INTERIOR OF NOSE CAB-THE RED TO BE NON SKID.
- NOTE #27 THE FEET OF ALL GRAB HANDLES TO BE PAINTED TO MATCH THE BACKGROUND COLOR.



VIEW AT REAR DOOR OF CAB



"A" SIDE

CONTRIBUTORS: SANTA FE RAILROAD
 GENERAL ELECTRIC CO.
 HOMER C. HENRY
 MIKE MARTIN
 GREG VOGELMAN
 BRUCE JACOBS
 CRAIG WALKER

RESEARCH COORDINATED BY DALE MARTIN