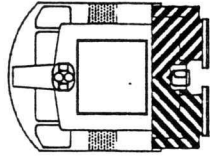
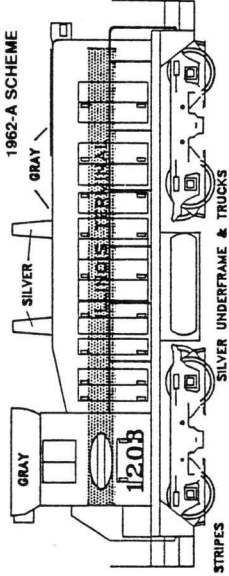
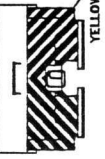
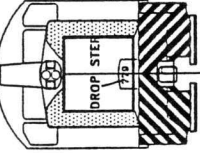
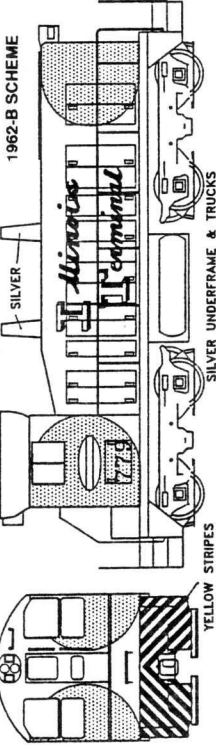
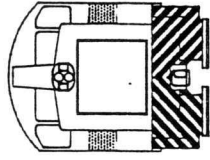
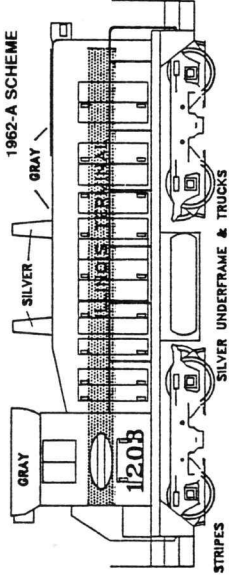
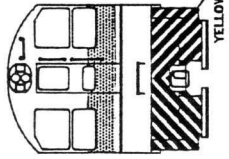
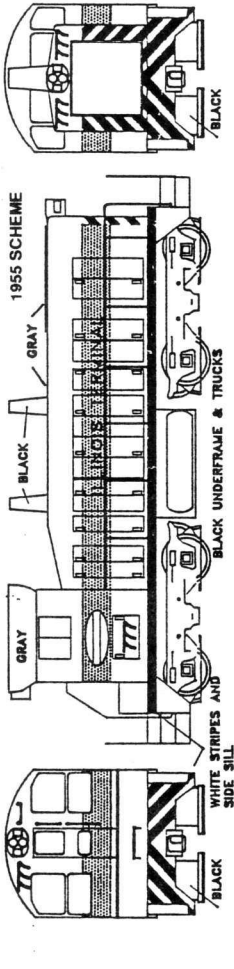
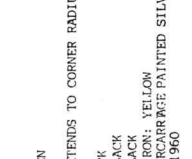
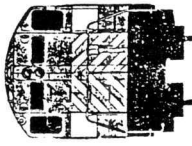
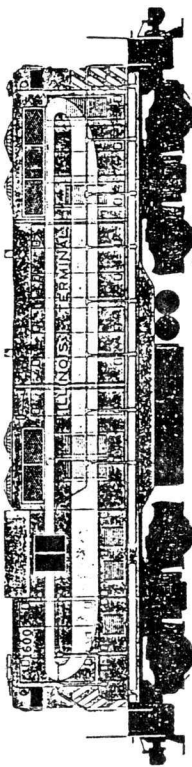


MICROSCALE DECAL NUMBER 87-651 & (87-652 STRIPES) ILLINOIS TERMINAL RAILROAD LOCOMOTIVES 1945-1982



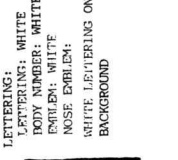
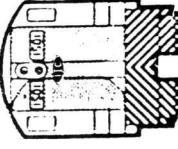
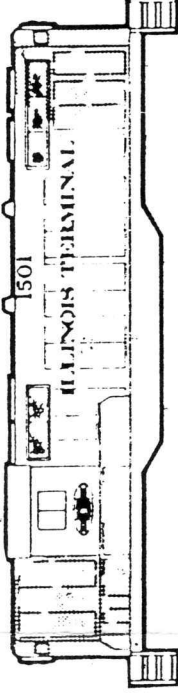
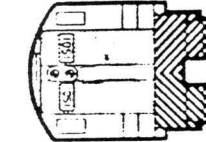
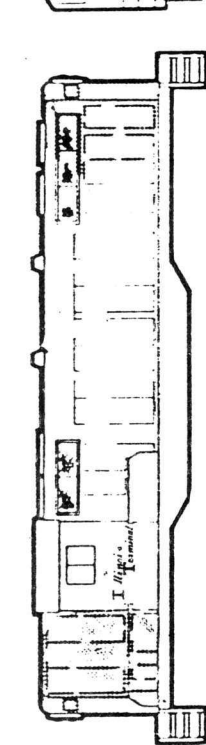
COLORS:
 YELLOW - CLOSE TO FLOOQUIL REEFER YELLOW
 GREEN - FLOOQUIL BN GREEN (NOTE: THERE WERE MANY SHADES OF GREEN USED, ALL CLOSE TO THIS COLOR SOME WERE BRIGHTER OR DARKER. OTHER SHADES ARE CLOSE TO FLOOQUIL LIGHT GREEN)
 GRAY - CLOSE TO FLOOQUIL PRIMER
 SILVER - CLOSE TO FLOOQUIL BRIGHT SILVER



Scheme A
 BODY: END GREEN
 CAB: SAME
 ROOF: GRAY, EXTENDS TO CORNER RADIUS
 PILOT: BLACK
 UNDERFRAME: BLACK
 SIDE SILL: BLACK
 RAILING/GRAB IRON: YELLOW
 NOTATION: UNDERARRANGE PAINTED SILVER IN 1960
 IN 1960

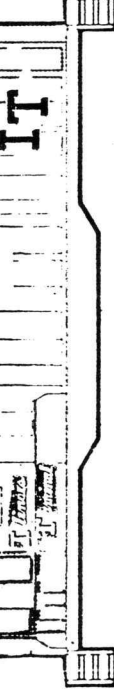
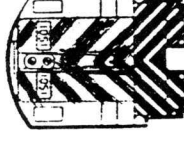
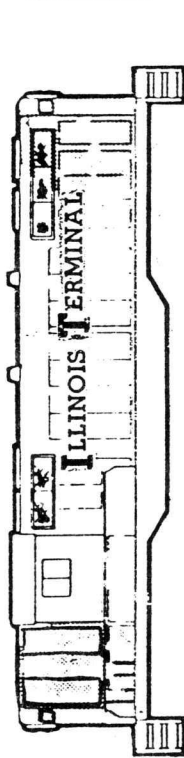
LETTERING:
 BODY STRIPE: YELLOW
 NOSE STRIPE: WHITE SCOTCHLIGHT
 BODY NUMBER: YELLOW
 LETTERING: YELLOW
 EMBLEM: WHITE ON BLACK METAL MEDALLION

Scheme B
 BODY: APPLE GREEN - NOSE: YELLOW
 CAB: SAME
 ROOF: GRAY, EXTENDS TO CORNER RADIUS
 PILOT: YELLOW/GREEN 3" STRIPES
 UNDERFRAME SILVER
 SIDE SILL: APPLE GREEN
 RAILING/GRAB IRON: YELLOW



Scheme D
 SAME AS SCHEME B
 LETTERING: SCRIPT IN YELLOW WITH BLACK SHADING OF OFFSET I T
 BODY NUMBER: YELLOW
 EMBLEM: NONE USED
 NOSE EMBLEM: NONE USED

LETTERING:
 BODY NUMBER: WHITE
 EMBLEM: WHITE
 NOSE EMBLEM: WHITE
 WHITE LETTERING ON GREEN BACKGROUND



Scheme F
 BODY: LATE IT GREEN
 CAB: SAME
 ROOF: ALUMINUM, EXTENDS TO CORNER RADIUS
 NOSE: GREEN/YELLOW 8" STRIPES
 PILOT: SAME, SNOW PLOW MOUNTED ON FRONT IS PAINTED GREEN
 UNDERFRAME: BLACK
 SIDE SILL: YELLOW
 RAILING/GRAB IRONS: YELLOW

Scheme E
 BODY: I T GREEN
 CAB: SAME
 ROOF: ALUMINUM, EXTENDS TO CORNER RADIUS
 NOSE: GREEN/YELLOW 8" STRIPES
 PILOT: SAME
 P.LATFORM: BLACK
 UNDERFRAME: SILVER
 SIDE SILL: YELLOW
 RAILING/GRAB IRON: YELLOW

LETTERING:
 SCRIPT IN YELLOW WITH BLACK SHADING OF OFFSET I T
 BODY NUMBER: YELLOW
 EMBLEM: LARGE OFFSET I T ON ENGINE BODY ON UNITS 1502 & 1505 ONLY, YELLOW LETTERS WITH BLACK SHADING.

NOTE: WE COUNTED AT LEAST 13 DIFFERENT PAINT SCHEMES POSSIBLE FROM THIS DECAL SET. WE DO NOT HAVE SPACE TO SHOW THEM ALL. THE ILLINOIS TERMINAL RAILROAD HISTORICAL SOCIETY IS WORKING ON A BOOK OF THE DIFFERENT PAINT SCHEMES AND ALSO THE COLORS TO USE WHEN MODELING THEM.

CONTRIBUTORS:
 ILLINOIS TERMINAL HIST. SOC.
 TED MINKANIC
 DALE JENKINS
 DOUG SPINN

ILLINOIS TERMINAL HISTORICAL SOCIETY
 P.O. BOX 251
 WASHINGTON, ILL. 61571

RESEARCH COORDINATED BY DALE MARTIN