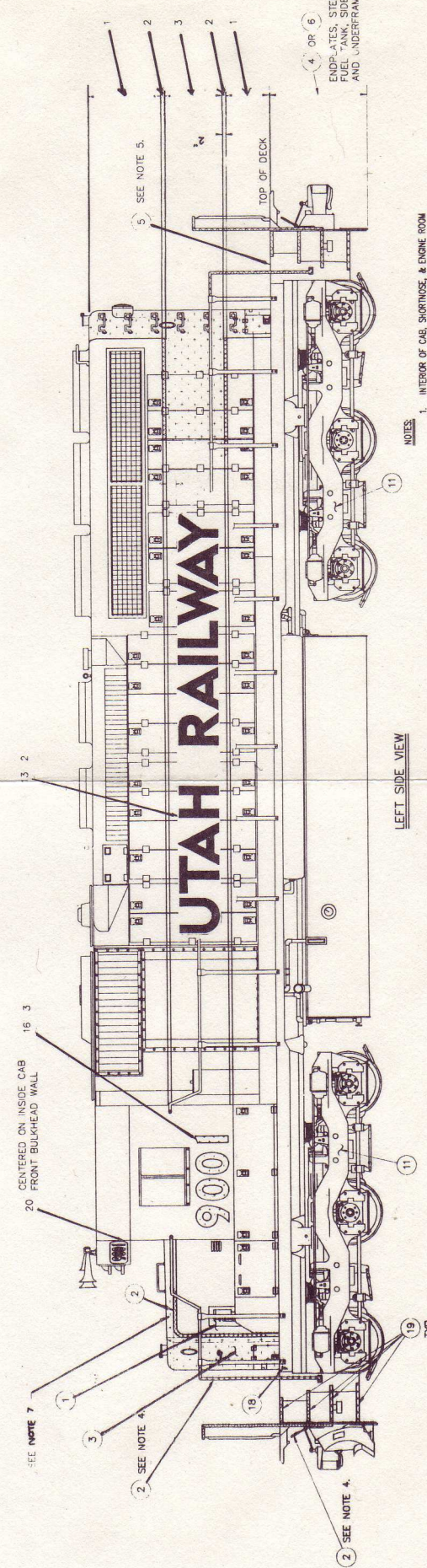
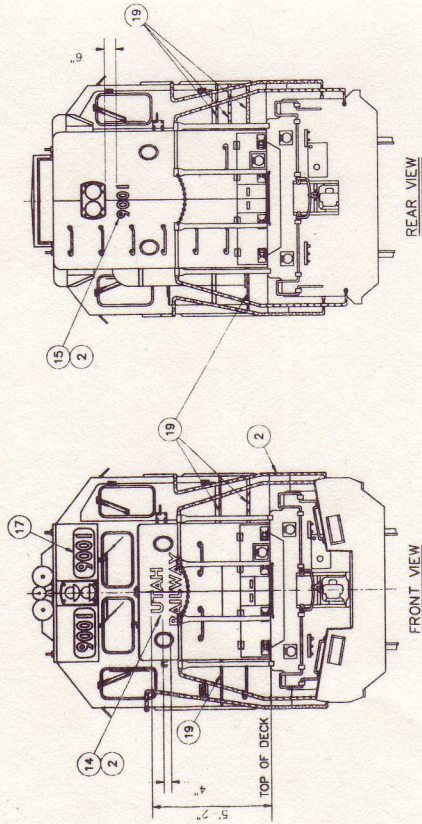


MICROSCALE DECAL NUMBER 87-668 UTAH RAILWAY REBUILT SD-40 LOCOS

COLORS: RED - SCALECOAT OR FLOQUIL SP SCARLET
GRAY - CSX GRAY (CLOSE TO SCALECOAT M OF W GRAY)

ENDS OF HANDRAILS BY STEPS ARE YELLOW UP TO FIRST STANTION, ALSO COUPLER LIFT BARS TRUCKS ARE SILVER

ITEM NO. (REF.)	DESCRIPTION	QUANTITY	PART NUMBER (DRAWING)	ITEM NO. (REF.)	DESCRIPTION
1	AN PAINT - MEDIUM GRAY			15	1 6" ROAD NUMBER - PREMASK
2	AN PAINT - YELLOW "MIRON"			16	2 20" ROAD NUMBER - PREMASK
3	AN PAINT - SCARLET "MIRON"			17	2 NUMBER BOARD
4	AN PAINT - BLACK ALLOY			18	2 3" x 1" (Ø FRONT) - STENCIL
5	AN PAINT - BLACK ALLOY			19	AN YELLOW STRIPE - REFLECT.
6	AN PAINT - BLACK "MIRON"			20	AN 2" ROAD NUMBERS - STENCIL
7	AN ACTIVATOR - GAYLON			21	2 FIRE EXTINGUISHER INSIDE
8	AN ACTIVATOR - IRON			22	1 WATER FILL INSIDE
9	AN PAINT - SILVER METALLIC			23	1 ENGINE OIL DRAIN
10	AN PAINT - BLACK			24	1 AIR COMPRESSOR OIL DRAIN
11	AN PAINT - SILVER METALLIC			25	1 ENGINE WATER DRAIN
12	AN PRIMER - "MIRON" COMPATIBLE			26	2 COILS, 1/2" DIA. 1/4" W. 200
13	2 24" UTAH RY. - PREMASK			27	2 BRAKE CYL. C.O.
14	1 6" UTAH RY. - PREMASK			28	4 GEAR RATIO 52:15
				29	2 MORRISON-HANDBEN. PART-FULLER



- NOTES**
- INTERIOR OF CAB, SHORTNOSE, & ENGINE ROOM TO BE ITEM 9 - "SLIDE GRAY".
 - CONTROL STAND TO BE ITEM 10 - "BLACK".
 - FUEL FILLER CAP & SIGHT GLASS TO BE ITEM 3 - SCARLET
 - ALL GRAB RAILS & HANDRAILS WERE CROSS-HATCHED TO ITEM 2 - "YELLOW" (BOTH ENDS) TO BEP OF STEPS, AND INWARDS TO BE ITEM 3 - "SCARLET"
 - ITEM 5 - "MIRROR BLACK"
 - DO NOT PAINT COUPLER WHEEL PLATES
 - PAINT TOP OF SHORTNOSE NON-SID "SCARLET".

- LOCATIONS FOR "1" CUT STENCILS (YELLOW-ITEM 2):**
- LOCATE ON TOP OF DOOR WHERE EXTINGUISHERS ARE ACCESSED.
 - LOCATE ON TOP OF DOOR WHERE WATER FILL IS ACCESSED.
 - 21. "FIRE EXTINGUISHERS INSIDE" - LOCATE ON TOP OF DOOR WHERE WATER FILL IS ACCESSED.
 - 22. "WATER FILL INSIDE" - LOCATE ON TOP OF DOOR WHERE WATER FILL IS ACCESSED.
 - 23. "ENGINE OIL DRAIN" - LOCATE ON SIDE SILL OVER ENGINE OIL DRAIN.
 - 24. "AIR COMPRESSOR OIL DRAIN" - LOCATE ON SIDE SILL OVER AIR COMPRESSOR OIL DRAIN.
 - 25. "ENGINE WATER DRAIN" - LOCATE ON SIDE SILL OVER THE CENTER OF EACH TANK.
 - 26. "COILS..." - LOCATE ON TOP OF EACH BRAKE CYLINDER OUTLET COOL.
 - 27. "BRAKE CYL. C.O." - LOCATE ON EACH SIDE OF EACH TRUCK FRAME.
 - 28. "GEAR RATIO 52:15" - LOCATE ON SIBSILL OVER CENTER OF EACH TRUCK.
 - 29. "MORRISON-HANDBEN..." - LOCATE ON SIBSILL OVER CENTER OF EACH TRUCK.

RESEARCH COORDINATED BY DALE MARTIN