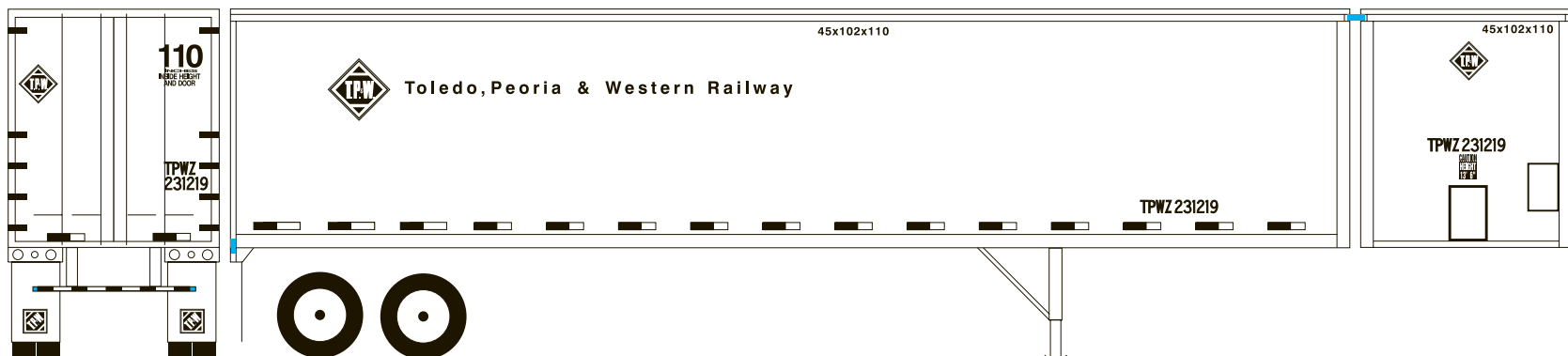


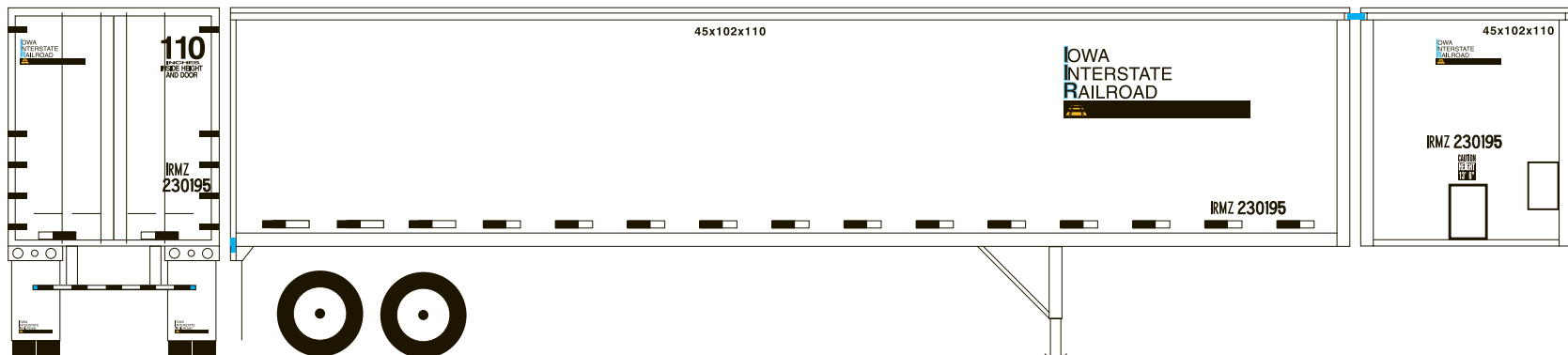
TP&W 45' TRAILER

SIDES, ENDS AND WHEEL CENTERS ARE WHITE.
 ROOF, SIDE SILL, EQUIPMENT BOXES, FRONT CORNER POST, DOOR LATCH BARS, HINGES,
 DOOR FRAME, REAR BUMPER AND LANDING GEAR ARE SILVER OR NATURAL METAL.
 MUD FLAPS ARE WHITE.
 LOGO AND NAME ARE TO THE LEFT ON BOTH SIDES. NUMBERS ARE TO THE FRONT.



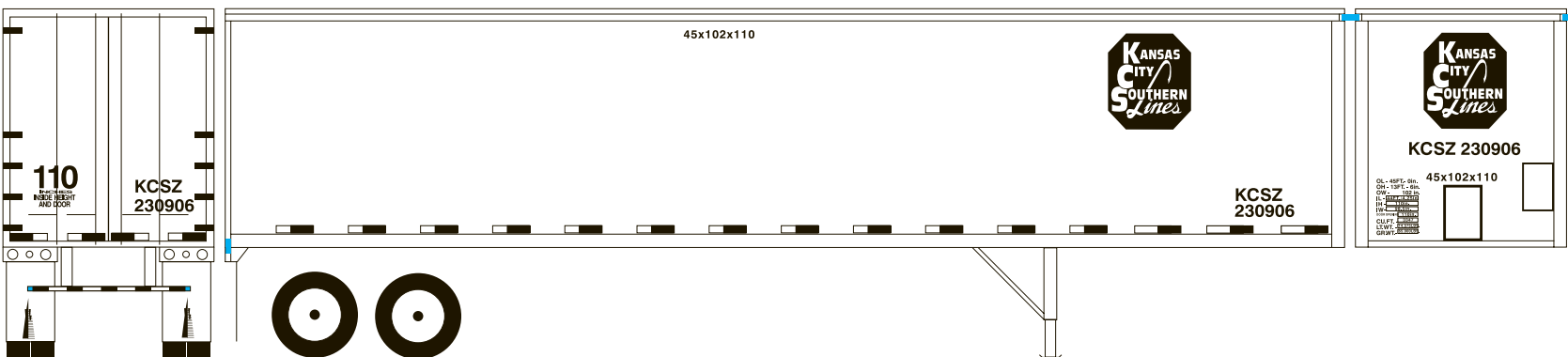
IOWA INTERSTATE 45' TRAILER

SIDES, ENDS AND WHEEL CENTERS ARE WHITE.
 ROOF, SIDE SILL, EQUIPMENT BOXES, FRONT CORNER POST, DOOR LATCH BARS, HINGES,
 DOOR FRAME, REAR BUMPER AND LANDING GEAR ARE SILVER OR NATURAL METAL.
 MUD FLAPS ARE WHITE.
 LOGO, NAME AND NUMBERS ARE TO THE FRONT ON BOTH SIDES.



KCS 45' TRAILER

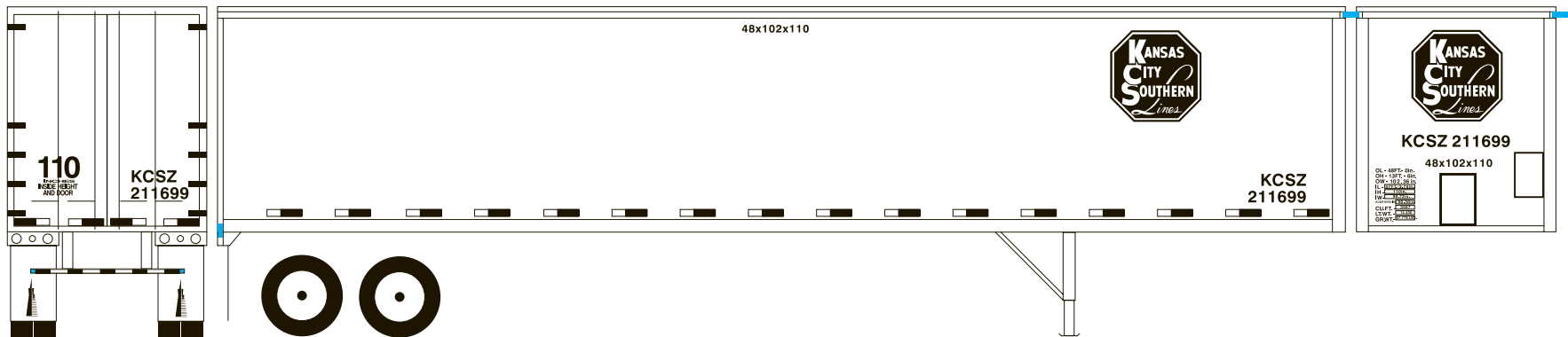
SIDES, ENDS AND WHEEL CENTERS ARE WHITE.
 ROOF, SIDE SILL, EQUIPMENT BOXES, FRONT CORNER POST, DOOR LATCH BARS, HINGES,
 DOOR FRAME, REAR BUMPER AND LANDING GEAR ARE SILVER OR NATURAL METAL.
 MUD FLAPS ARE BLACK.
 LOGO AND NUMBERS ARE TO THE FRONT ON BOTH SIDES.



MICROSCALE DECAL NUMBER 87-897

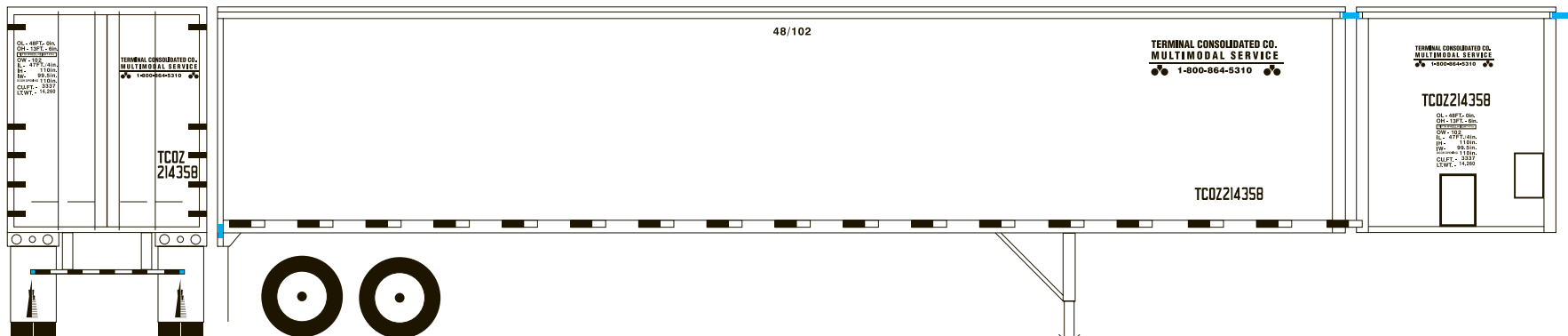
45' & 48' TRAILERS AND TRACTOR TP&W, IOWA INTERSTATE, KCS, TERMINAL CONSOLIDATED

SIDES, ENDS AND WHEEL CENTERS ARE WHITE.
 ROOF, SIDE SILL, EQUIPMENT BOXES, DOOR LATCH BARS, HINGES, DOOR FRAME,
 REAR BUMPER AND LANDING GEAR ARE SILVER OR NATURAL METAL.
 MUD FLAPS ARE BLACK.
 LOGO AND NUMBERS ARE TO THE FRONT ON BOTH SIDES.



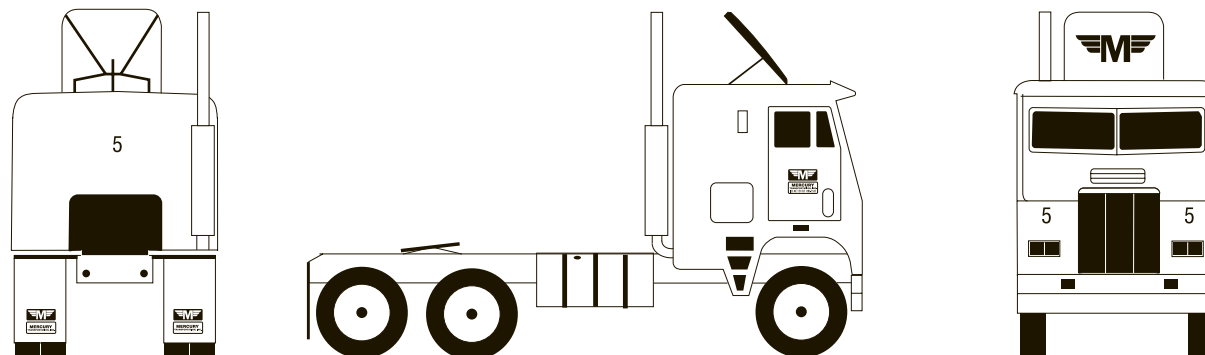
TERMINAL CONSOLIDATED 48' TRAILER

SIDES, ENDS AND WHEEL CENTERS ARE WHITE.
 ROOF, SIDE SILL, EQUIPMENT BOXES, DOOR LATCH BARS, HINGES, DOOR FRAME,
 REAR BUMPER AND LANDING GEAR ARE SILVER OR NATURAL METAL.
 MUD FLAPS ARE BLACK.
 LOGO, AND NUMBERS ARE TO THE FRONT ON BOTH SIDES.



MERCURY TRANSPORTATION TRACTOR

CAB AND SLEEPER ARE PAINTED WHITE.
 FUEL TANK, WHEEL CENTERS, EXHAUST STACKS, FRONT RADIATOR GRILL, CAB STEPS,
 AIR HORNS, HAND RAILS AND FRONT BUMPER ARE SILVER OR CHROME.
 FRAME AND MUD FLAPS ARE BLACK.



DRAWINGS ARE FOR LETTERING PLACEMENT ONLY.
 REFER TO PROTOTYPE PICTURES WHENEVER POSSIBLE.
 FOR BUILDERS LOGOS AND SUPER DETAILING USE MICROSCALE DECAL
 SET #87-852 IN HO-SCALE AND 60-852 IN N-SCALE.

CONTRIBUTORS

BRUCE JACOBS
 RICHARD P. BARNES JR.
 PAUL KNOWLS
 JOHN L. BECKER
 ERIC W. MOERBE
 DAVE BONTRAGER