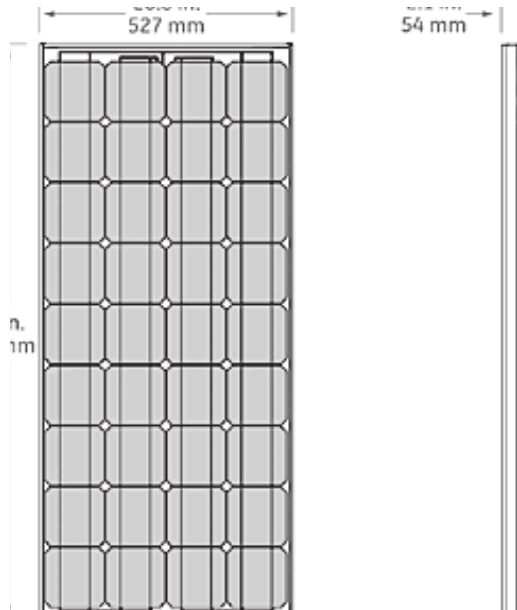


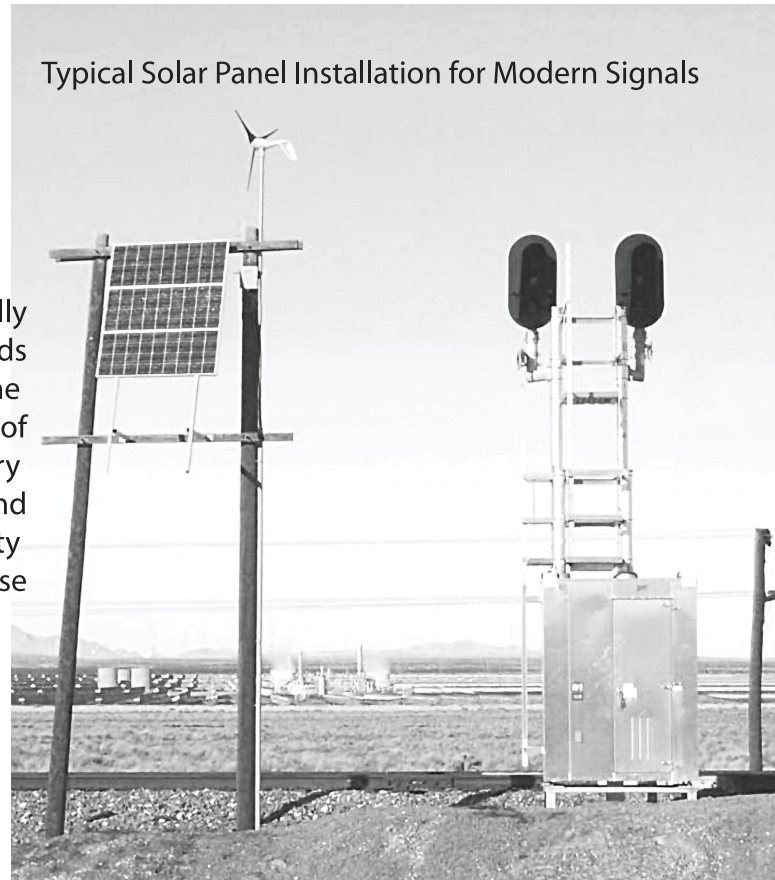
This set will cover Solar Panels built by GE in 2000+ timeframe. Usage was primarily designed for signal installations around a model layout. Due to the texture not being specific to just model trains, a modeler could repurpose this for military and various other model building exercises. The texture in this set was developed for a single panel or you may trim a larger uniform texture to fit a variety of looks. Some may consider covering the applied surface after the decal is set with automotive tinting film for enhance realism.

MICROSCALE Decal  
HO Scale 87-1407  
N Scale 60-1407

## GE 72W 12V SOLAR PANEL



panels usually  
at an angle towards  
the direction of the  
sun. Multiples of  
three are very  
common and  
close in proximity  
to the signal case



visit us online!  
[www.microscale.com](http://www.microscale.com)  
sign up for the  
monthly newsletter!

**Paint Info:**  
overall panel painted aluminum  
3M automotive tinting used after decal application for enhanced realism  
tinting darkness at the discretion of the modeler

**Photos and data available here:**  
<http://rrpicturearchives.net/>